

SPRING 2019 £5.00 | \$10.00

BRIDGE FOR DESIGN



THE INTERNATIONAL RESOURCE FOR INTERIOR DESIGNERS

STEEPED IN HISTORY

Unique conversion of
a painter's workshop

PHOTOGRAPHS FABRICE RAMBERT WORDS SHELBA
CORNELISON









Award-winning interior architect Sybille de Margerie lives her philosophy: being creative with simplicity, modernising the traditional, making technology attractive and colours elegant. She designs for harmony and comfort, her creative concepts mixing the most profound uniqueness with culture and emotion...often intrinsically linking the environment or the history of a place...as she did in this recent London project.

"I'm not looking to leave my imprint on everything I do," she says. "I'm more interested in revealing the soul and uniqueness of a place."

This project of Sybille's is situated in an old workshop of Pre-Raphaelite painter Lawrence Alma Tadema, in the Abbey Road area of London. Steeped in history and prestige, the site is classed as historic, the guiding principle behind the decoration being to preserve and enhance the space's historic characteristics.

The architecture showcases the impressive former workshop in a stunning platinum leaf, its original arches preserved at the entrance.

A mixture of both styles and periods, as much in the choice of materials as in the furniture itself, exists in harmony with the clients' own collections of art.

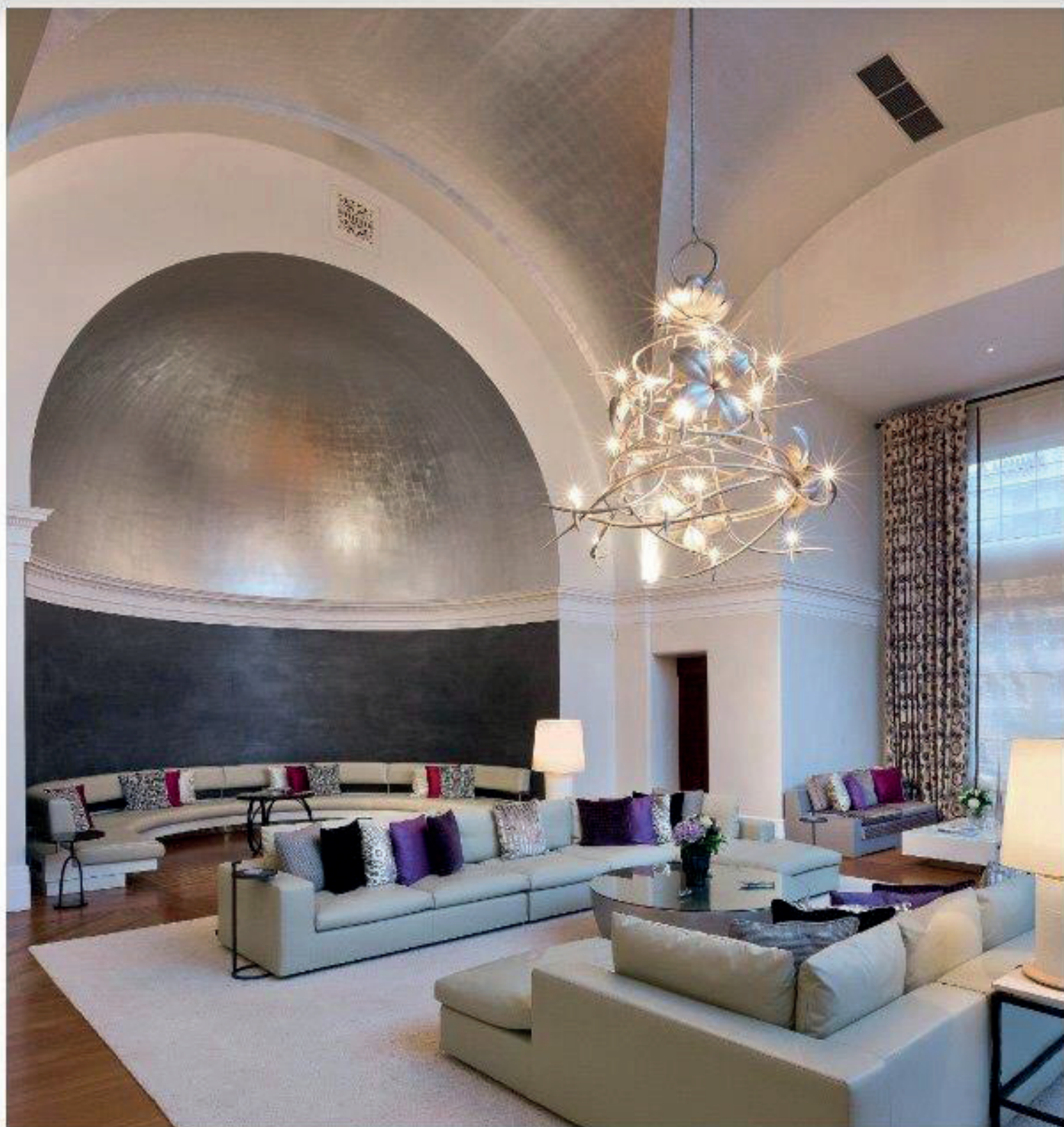
Marble, onyx, bronze, very sophisticated fabric selections,



this page A Rouelat pendant light takes center stage over Ego sofas and Florence Bonnet sculptures previous page In the master bedroom a soft, cozy feel is created with Pateo bed linens, cushions from Zimmer Rohde and J. Robert Scott, cushions by Andrew Martin and a silk rug from Tai Ping. Left: Hervé van der Bruggen pendant ceiling lighting lights up the far wall of the master bedroom.



clockwise: The bed in the bedroom is a leather bed frame by Cecconi, perfectly paired with leather armchairs by Flexform. Beige marble tiling is used for the swimming pool, with Paolo Lenti furniture. The reception area also has beige marble tiling, whereas the bronze forest wall feature is made by Pierre-Alexandre Poulin. In the cinema room the red sofa by Giorgio and the Ping carpet create a soft and luxurious feel.



Decorative platinum patina is used on the silver dome ceiling to complement the curved sofa by Agencement and rug by Tai Ping

woollen materials, as well as leathers, mahogany and walnut are complemented by linen and silk rugs.

Masterful contemporary furniture and antiques help to create an extraordinary look.

The exceptional works of French and other international designers have been developed especially for this project. For example, the personalised chandelier

in the grand salon, the striking table in the dining room, custom-made pendant lighting and carefully-chosen sofas, all hold special places in the outcome of this truly outstanding place.

Even the architectural modernity of the swimming pool, fitness room and guest house contrasts nicely against the Victorian style of this listed building. Demands of family



Bespoke chairs by Inema surround the Promemora table

life, comfort, sensuality, rigour and poetry were not lost in this luxury-without-ostentation setting.

Throughout, all artwork shown is part of the clients' private collection...adding colourful and meaningful accents beyond the norm. Sybille's own innate sophistication, furthered by a strong personality and bold taste, allows her to assert her own sense of luxury to each of her highly exclusive projects.

"I attach great importance to fluidity of spaces, light and comfort, as well as choice materials and harmony of colours," she says. This project, functional and contemporary, like so many of her other – often award-winning projects – show her great attention to detail is second to none, and her striving for perfection is such that it draws together all five senses, often simultaneously.

About Sybille de Margerie

With elegance and rigour, Paris interior architect Sybille de Margerie has forged an exceptional path with ambitious projects. From dreamy palaces, fine hotels and the best addresses in the world, she has weaved natural predilections in the heart of an exceptional culture where "made-to-measure" rules supreme.

This invaluable savoir-faire, shared with a 20-person team of collaborators, has given her studio the reputation of international acclaim where creativity never stops reinventing itself. Trained at the esteemed Ecole Boulle, she has offices in Paris, Florence and Dubai.

WWW.SYILLEDEMARGERIE.COM