

# SINGAPORE TATLER HOMES

*Living . Luxurious*

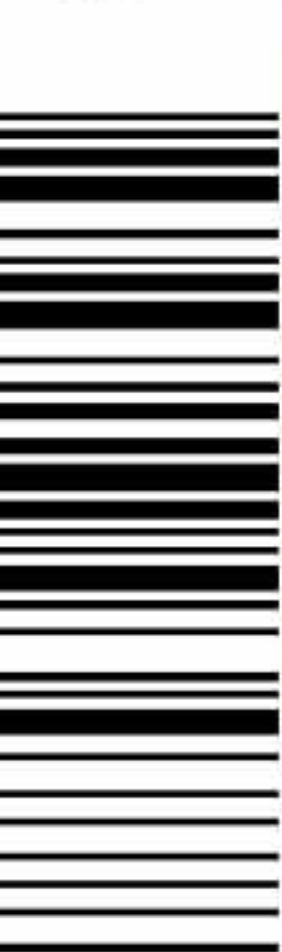
## VERDANT INTENTIONS

*ECO-DESIGN, SUSTAINABLE PIECES AND  
SPACES THAT BRING NATURE TO THE FORE*

SINGAPORE TATLER HOMES

APRIL - MAY 2017

LIVING • LUXURIOUS



S\$8.00  
(INCL. GST)



# Natural Fit

Nature and metallurgy meet in this furniture collection by Sybille de Margerie for Pouenat. For this collection, the French designer creatively pairs nature-inspired details with the lighting and furniture brand's finesse in metalworking. The Fusion dining table marries log-like brass legs with a wood surface, while the Ilot coffee table imagines an archipelago of tree logs covered in a striking trinity of materials. [pouenat.fr](http://pouenat.fr)



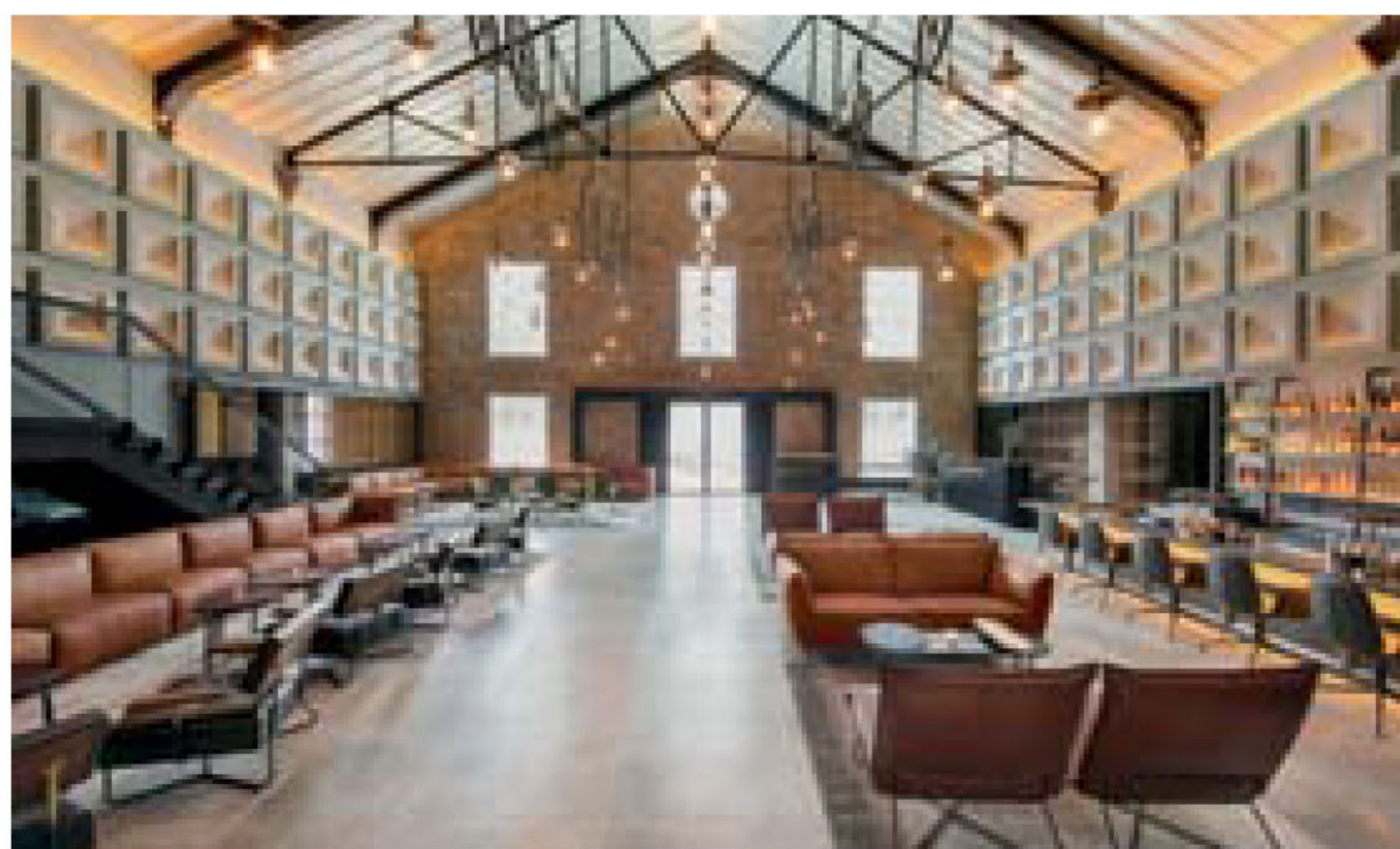
## TASTEFUL NUDES

Founded in 2014, Nude is a contemporary glassware brand that's pushing the envelope in tableware with its sculptural, lead-free crystal objects—designed in-house or by talented rising design stars. Its latest offerings include Beak (a geometrically designed collection of tall-necked jugs with beak-like sprouts) and Couple (a vase comprised of two parts that can be used for elaborate bouquets or a single stalk). Both Beak and Couple were designed by Slovakian-born, Swiss-based product designer Tomas Kral. [nudeglass.com](http://nudeglass.com)



### INSPIRING PLACES

Chris Lee, founder of creative agency Asylum, is known for his inventive methods of adding a local touch to restaurant and store interiors, and branding. Most recently, his team was tasked to design an entire boutique hotel, The Warehouse Hotel (below). Here, the creative director reveals his favourite places in Singapore and beyond.



#### NAOSHIMA

"This art island in Japan is an excellent place for appreciating design. I visit Japan about five times a year, as the country is home to many of my favourite things and places, plus I know the local design scene very well."

#### THE INTERLACE

"To have a vision so bold and simple as The Interlace is outstanding. Singapore had the reputation of having the best architects doing their worst work here; we had that label for a while. I think The Interlace has put us back on the design map."

#### NATIONAL THEATRE

"I loved the theatre with its five distinctive, triangular spires, but it was demolished in the 1980s. We've done well to preserve buildings, like what's now The Warehouse Hotel, but it was a shame to lose the theatre."

#### 21\_21 DESIGN SIGHT

"This is a great design museum in Tokyo's Roppongi district, as it's not too large and very well curated. It was started by (architect) Tadao Ando and (fashion designer) Issey Miyake, who are still its curators today."

